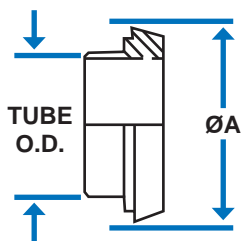


DIN Imperial Couplings Size Chart

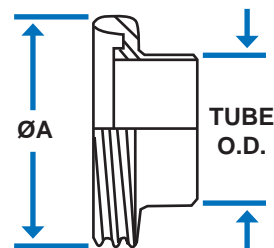


Please Note: The following image is sized to scale of actual sanitary tri-clamp fittings. 4" & 6" not shown on this page, however, their dimensions are listed at the bottom of this page.



Weld Males

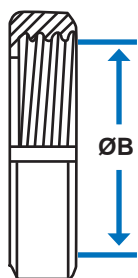
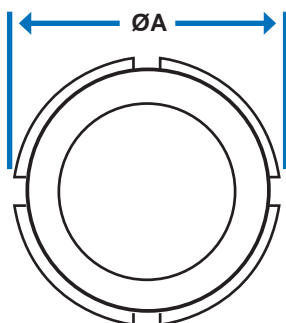
Tube O.D. (inches)	ØA
1	1.73
1-1/2	2.20
2	2.68
2-1/2	3.39
3	3.94
4	4.76



Weld Liners

Tube O.D. (inches)	ØA
1	2.04
1-1/2	2.56
2	3.07
2-1/2	3.74
3	4.31
4	5.10

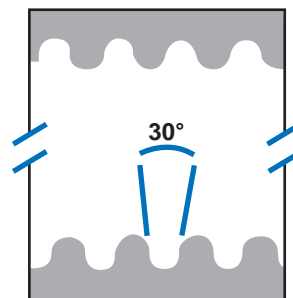
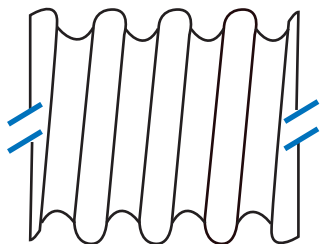
Round Nut



Tube O.D. (inches)	DN	ØA	B Thread I.D.	Threads Per Inch
1	25	2.48	1.88	6
1-1/2	40	3.07	2.39	6
2	50	3.62	2.90	6
2-1/2	65	4.41	3.49	6
3	80	5.00	4.14	4
4	100	5.83	4.94	4

Note: Nuts 3" and longer will have 6 slots.

DIN Thread Form



Female Thread

Gasket

